

# Dell KACE™ K2000 Deployment Appliance

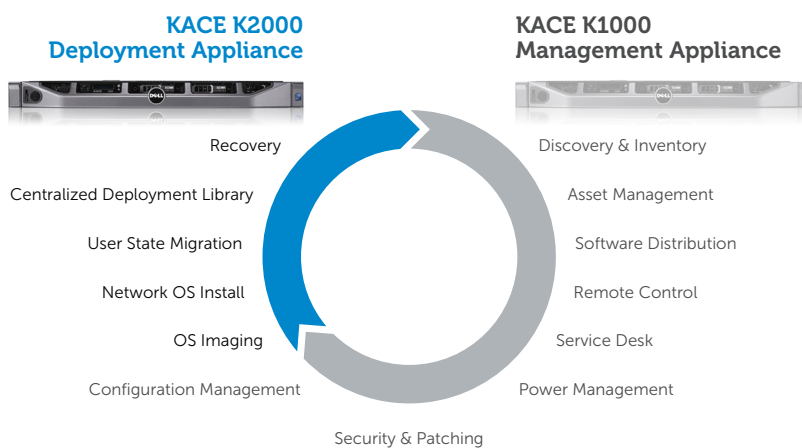


Easy-to-use, comprehensive, affordable  
deployment appliance

The Dell KACE™ K2000 Deployment Appliance fulfills the systems provisioning needs of an organization including inventory assessment, OS deployment, application installation, configuration and recovery.

**Designed to save you time, and your organization money, the KACE Deployment Appliance typically installs in under one day at a low total cost.**

## Computer Lifecycle Management



The KACE Deployment Appliance delivers a fully integrated systems provisioning solution, unlike traditional OS deployment software solutions. Traditional software typically requires complex and time-consuming deployments and may not fully automate systems provisioning. The KACE Deployment Appliance breaks the complexity and cost barrier by utilizing an appliance-based architecture.

KACE Appliances are available as both physical and virtual appliances, providing customers with a variety of deployment options and allowing them to leverage their investment in VMware Infrastructure.

### KACE Benefits

Organizations of all types use the KACE Family of Appliances to gain benefits in markets such as education, state and local government, healthcare, financial services, manufacturing, legal, and many more.

- **Deploy in as little as one day**
- **Train in hours via the Web**
- **Upgrade in minutes**
- **Low total cost of ownership**
- **No hardware or software pre-requisites**
- **No incremental professional service fees**

“For me, the KACE Appliance really is the extra person. If something goes wrong, I don’t have to physically visit the machine... I can push out a new image, reboot, and there’s a new machine sitting there. Problem solved.”

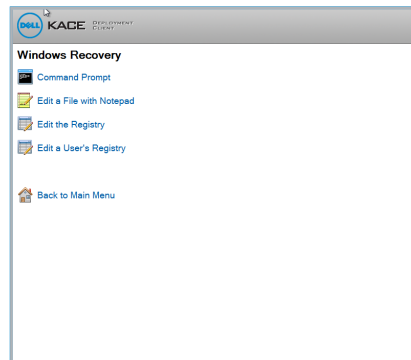
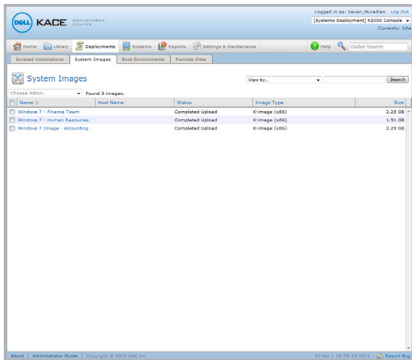
*Leigh Scaggs,  
Network Administrator,  
Boyd County Public Library*

Go to [www.dell.com/kace](http://www.dell.com/kace) for details.

# KACE K2000 Deployment Appliance

Fulfills the systems deployment needs of any organization

- **Disk imaging** is intelligent, file-based K-imaging that reduces image management, capture and storage costs for Windows and Mac OS
- **Windows driver management** automatically downloads the latest drivers by computer model, while the driver harvesting tool and hardware inventory make working with other drivers easy
- **Centralized deployment library** for easy storing of deployment assets in one manageable, secure location
- **Customizable pre- and post-deployment configuration** enables automation of all deployment tasks, such as RAID and BIOS configuration, application installation and your own scripts
- **Remote systems repair & recovery** with native tools to recover corrupt Window and Mac systems
- **Integrated reporting** eases systems deployment and appliance administration
- **Windows network OS install** allows for hardware independent provisioning of any system
- **Windows user state migration** centrally captures, stores and deploys user-specific settings and files, enforces compliance by excluding files by type and location, and offers a single-step offline migration
- **Remote site management** allows deployment of disk images, operating systems, drivers and applications at remote sites without dedicated on-site hardware or staff
- **Computer inventory scanning and assessment** to collect detailed hardware inventory on target systems
- **Network boot architecture** allows deployment assets to be provisioned over the network, even for bare-metal machines, i.e. those without any operating system and software



The K2000 Deployment Appliance utilizes a familiar tab-based interface that allows IT administrators of all skill levels to accomplish the breadth of systems deployment tasks.

“Using the K2000 Appliance we are saving great amounts of time over our old methods. In the past we would manually image 10 or 15 computers in a day. With the K2000, we’re able to image upwards of over 100 computers in one day.”

**Mark Luffman**  
Director of IT Service,  
Cottonwood Oak Creek  
School Dist.

## KACE 2010 Customer Survey Results

- Over 62% of users who evaluated ROI report the KACE Appliance paid for itself in less than six months
- Over 69% of KACE customers deployed in less than a week
- 79% of KACE customers reported “high” satisfaction with KACE Appliances
- 91% of existing KACE customers renewed support agreements

## K2000 Administration: Centralized for Simplicity

The K2000 includes an integrated web-based console for centralized systems deployment and systems recovery.

- The easy-to-use console can be accessed via any device using a supported browser
- Remote access to all functionality across the deployment lifecycle
- KACE K1000 Management Appliance integration includes single sign on, fast switching and viewing of K1000 inventory from the K2000

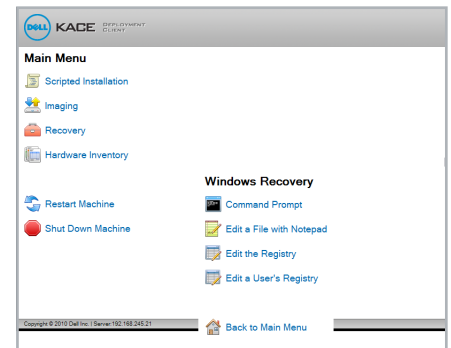
## Remote Replication with Virtual Remote Appliances

Virtual remote appliances allow a single centralized K2000 Deployment Appliance to stage and deploy disk images, network OS installs, drivers and applications to remote sites without the need for dedicated hardware or personnel at remote facilities. They also provide remote PXE and NetBoot services. Virtual remote appliances are easy to deploy and maintain, and dramatically reduce the cost and complexity of managing a multi-site organization.

- Includes integrated virtual infrastructure allowing deployment on almost any VMWare server product
- Granular control over the timing and contents of staged deployment assets
- Scheduled incremental synchronization and bandwidth throttling help minimize network utilization while keeping all remote sites updated with current deployment assets

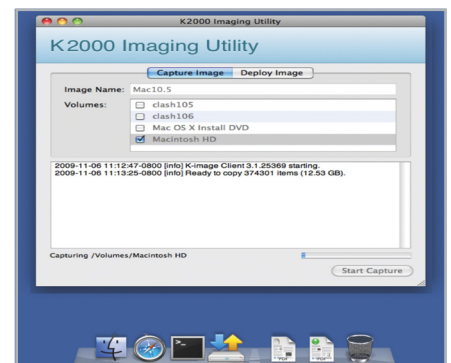
## K2000 Boot Environment (KBE) for Windows platforms

Leverage the power of Windows PE without the pain. The K2000 eliminates the need for custom scripts and command line arguments.



## Mac OS X NetBoot for Mac platforms

Execute key functions for Mac systems such as image capture and deployment through the K2000 Mac imaging utility. The Finder interface of Mac OS X NetBoot allows it to double as a recovery tool.



## Dell KACE Deployment Appliances

The Dell KACE Deployment Appliance is the all in one, easy and affordable appliance that fulfills the systems deployment needs of organizations of all sizes, including inventory assessment, OS and application provisioning, migration and recovery. The KACE Deployment Appliance supports plug-and-play deployment onto your LAN, and is simple to upgrade. Absolutely no up-front customization or programming effort is required to enable the appliance. Simply plug it into your network, and immediately begin deploying systems.

## Models

		K2100	K2200
<b>Capacity</b>	Recommended Deployment Environment (Nodes)	100-3,000	3,000-20,000
	Storage	230 GB	480 GB
	Image Capacity (Number)	80	160
<b>Hardware</b>	Form Factor	19" 1 EIA-310-E 1 U rackmount	19" EIA-310-E 1 U rackmount
	Dimensions (inches)	1.7 X 17.1 X 24.7	1.7 X 19 X 30.4
	CPU	1 Intel Xeon Quad Core (2.4 GHz)	2 Xeon Quad Core (2.4 GHz)
	Memory	3 GB	6 GB
	Ethernet Ports	Dual Gigabit Ethernet Ports	Four Gigabit Ethernet Ports
	Redundant Disk Array	RAID 1 configuration	RAID 5 configuration
	Hot-swappable Hard Drives	2 X 250 GB SATA II 7.2K RPM	3 X 250 GB SATA II 7.2K RPM
	Power Supply	408 Watts, 100 - 240 Volts	520 Watts, 100 - 240 Volts

		VK2000
<b>Virtual Machine Requirements</b>	VCPUs	2 VCPUs (4000 Mhz or More Reserved/Shares = High)
	Memory	2 GB (512 MB or More Reserved/Shares = High)
	Network	1 Ethernet Port
	Available Disk	250 GB
	Server and Operating System	64-Bit

## System Requirements

### Managed System Requirements

#### • Windows®

Windows 7  
(Professional, Enterprise, Ultimate, x86 and x64 architectures)

Windows Vista  
(Business, Enterprise, Ultimate, Edition support)

Windows XP SP2 – latest  
(Professional, Tablet PC Edition, Media Center Edition)

Windows Server 2008  
(Web Edition, Standard Edition, HPC Edition)

Windows Server 2003  
(Web Edition, Standard Edition, Enterprise Edition, Datacenter Edition, HPC Edition)

Windows 2000  
(Professional, Server, Advanced Server, Datacenter Edition)

PXE-enabled network interface  
X86 system architecture  
Windows 64 Bit Support

#### • Mac

Mac OS X 10.4 - 10.6  
PowerPC and x86 architectures

### Web Administration Interface Requirements

Microsoft Internet Explorer 6.0+  
Mozilla Firefox 2+, Safari 3+

### VK2000 Appliance Requirements

VMware ESX and ESXi Server 3.5 or 4.0

Open Virtualization Format (OVF)

### Virtual Remote Site Appliance Requirements

VMware ESX and ESXi Server 3.5 or 4.0; VMWare Server or VMWare Workstation

2G RAM, 200G Disk, 2GHz processor  
Open Virtualization Format (OVF)



NOTE: Exact hardware specifications will vary based on availability, and can change without notice.

## Dell KACE Headquarters

1981 Landings Drive  
Mountain View, CA 94043  
877-MGMT-DONE Main  
650-649-1806 Fax

## www.dell.com/kace

kaceinfo@dell.com  
European Sales: kaceemea@dell.com  
Asia Pacific Sales: kaceapac@dell.com  
Australia New Zealand Sales: kaceanz@dell.com

While every effort is made to ensure the information given is accurate, Dell does not accept liability for any errors or mistakes which may arise. Specifications and other information in this document may be subject to change without notice.

Dell and KACE are trademarks of Dell Inc. Dell disclaims any proprietary interest in the marks and names of others. Microsoft and Windows are registered trademarks of Microsoft Corporation.

