

## Huawei AP7110 WLAN Access Point Rate/Range Performance Evaluation vs. Cisco Aironet 3602i AP

### EXECUTIVE SUMMARY

Driven by growth in the number of mobile workers, Wi-Fi (802.11n) now provides the primary office connectivity for many businesses. Higher per-client AP throughput at greater distances can reduce the number of APs required in a given location and thus, lower the customer's investment in WLAN hardware.

Huawei commissioned Tolly to validate the performance of its AP7110 WLAN AP with 3x3:3 MIMO capabilities and compare that to the Cisco Systems 4x4:3 MIMO-based AP. In tests of a single client, the Huawei AP7110 outperformed the Cisco Aironet 3602i AP in every test scenario. See Figure 1.

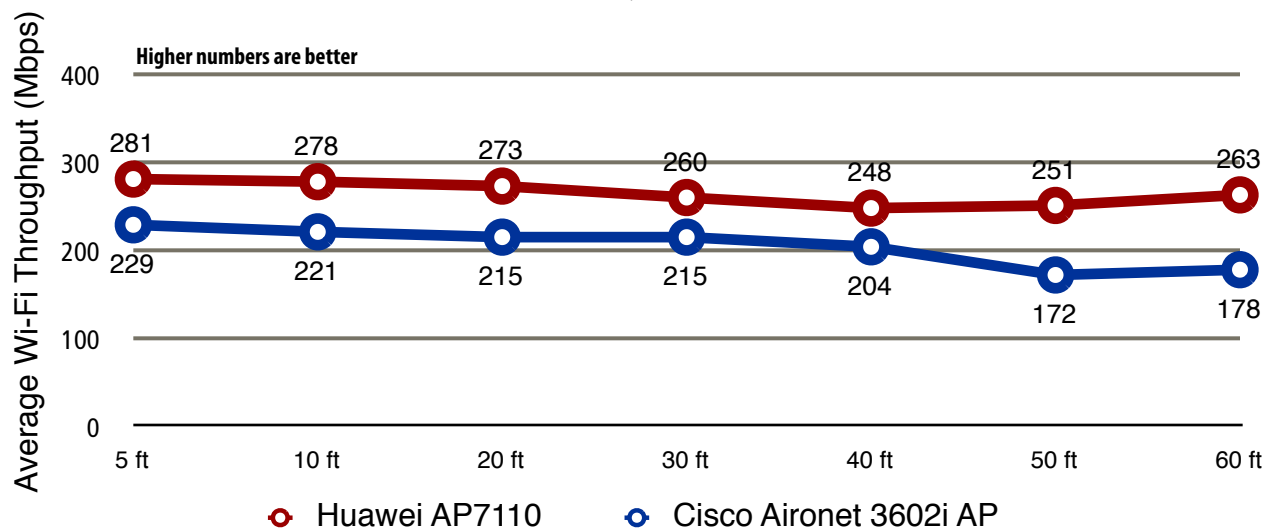
...<continued on next page>

### THE BOTTOM LINE

Huawei AP7110 WLAN Access Point provides:

- 1 23% higher average single-client throughput at 5 ft distance than Cisco Aironet 3602i AP
- 2 Maximum single-client downstream TCP throughput of 281Mbps over the 5GHz band
- 3 Better coverage performance with higher average downstream single-client throughput from all tested distances (5 ft to 60 ft) compared to Cisco Aironet 3602i AP

**Huawei AP7110 3x3:3 MIMO Access Point 802.11n LAN-to-WLAN Performance**  
Single-Client, Downstream Throughput  
(as reported by IxChariot v5.40)



Note: Traffic was unencrypted TCP. 5GHz Band. Distance is from client to AP under test.

Source: Tolly, September 2012

Figure 1



# Executive Summary (con't)

The Huawei AP7110 access point is equipped with 3 antennas, supports 3 spatial streams and works in conjunction with the Huawei AC6605 controller.

The Cisco Systems Aironet 3602i access point is equipped with 4 antennas<sup>1</sup>, also supports 3 spatial streams and works in conjunction with the Cisco 5508 Wireless Controller.

Tests benchmarked the throughput from a station connected to the wired Gigabit Ethernet LAN to a computer connected to the WLAN access point under test.

Tests were run at various distances between the client and the access point ranging from 5 to 60 feet.

At the first test point of 5 ft, the Huawei AP7110 delivered over 280Mbps of throughput to the test client. This was 52Mbps greater throughput than the Cisco Aironet solution at 229Mbps. See Table 1.

In tests ranging from 5 to 40 ft, the Huawei AP7110 throughput advantage was as great as 58Mbps, at 20 ft, and always at least 44Mbps greater throughput than Cisco.

At greater distances, the Huawei solution provided an even greater throughput advantage.

With tests at 50 and 60 ft, the Huawei solution still delivered over 250Mbps of



**Huawei Technologies, Co., Ltd**  
**AP7110 Access Point**  
**802.11n WLAN Performance**  
*Tolly Certified*  
*Tested September 2012*

throughput where, at both distances, the Cisco Aironet solution delivered less than 180Mbps. In these cases, the Huawei throughput advantage increased to 79 and 85Mbps more than Cisco at 50 and 60 ft respectively.

**Huawei AP7110 3x3:3 MIMO Access Point 802.11n LAN-to-WLAN Performance**  
Single-Client, Downstream Throughput (as reported by IxChariot v5.40)

DUT	Single-Client Throughput at Various Distances (Mbps)						
	5 ft	10 ft	20 ft	30 ft	40 ft	50 ft	60 ft
Huawei Throughput Advantage (Mbps)	52	57	58	45	44	79	85
Percentage of Huawei Throughput Advantage over Cisco	22.7%	25.8%	27.0%	20.9%	21.6%	45.9%	47.8%
Huawei AP7110	281	278	273	260	248	251	263
Cisco Aironet 3602i AP	229	221	215	215	204	172	178

Note: All tests used TCP traffic. Unencrypted SSID. 5GHz Band.

Source: Tolly, September 2012

Table 1

<sup>1</sup> According to Cisco Systems documentation, the 4th antenna is used for beam forming.

# Test Setup & Methodology

## Test Environment

Table 2 provides details of the WLAN solutions under test.

Tests were run in a vacant office environment measuring 80 ft x 40 ft.

A Dell E6430 with an Intel Core i5 CPU and Intel Centrino Ultimate-N 6300 AGN (dual-band 3x3:3 capable) running Windows XP Professional was used as the WLAN client for the single-client throughput testing.

## Wired-to-WLAN Single Client Throughput

Ixia IxChariot v5.40 with the built-in throughput test script was used for the single-client tests. TCP packets, downstream, unencrypted SSID, 5GHz with 149+ channels were used for both solutions.

Six pairs of traffic were used for Huawei AP7110. Eight pairs of traffic were used for the Cisco Aironet 3602i AP as the results were better than the results with six pairs of traffic.

Non-essential features such as Data Encryption, Rogue Detection, etc. were all disabled on the Cisco AP in order to get the best throughput results.

Factory default power level was used for both Cisco and Huawei APs.

Each test was run at least three times. Results were averaged from three runs.

## Huawei Enterprise Wireless LAN Portfolio



*Huawei offers a broad set of enterprise-class wireless LAN products.*

*In addition to the AP7110 featured in this report, Huawei provides single- and dual-band access points for both indoor and outdoor deployments in the AP60xx, AP63xx, AP65xx and AP66xx product families.*

*All Huawei WLAN products work with the Huawei AC6605 Access Controller.*

*For more information on Huawei's enterprise WLAN product line, scan the QR code or visit:*


<http://enterprise.huawei.com/en/products/network/wlan/index.htm>



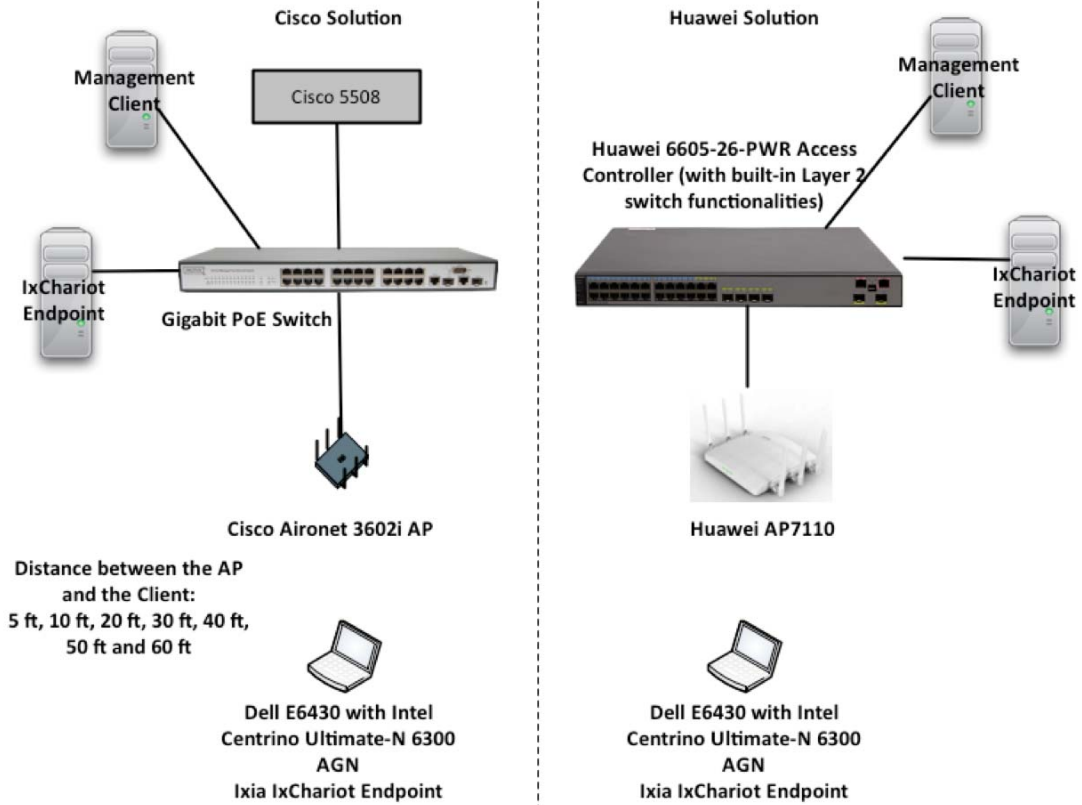
Source: Huawei, September 2012

## Test Equipment Summary

The Tolly Group gratefully acknowledges the providers of test equipment/software used in this project.

Vendor	Product	Web
Ixia	IxChariot version 5.40 Build level: 011	 <a href="http://www.ixiacom.com">http://www.ixiacom.com</a>

### Throughput Test Bed Diagram



Source: Tolly, September 2012

Figure 2

### Systems Under Test

Vendor	Controller	Access Point
Huawei Technologies, Co., Ltd	Huawei AC6605-26-PWR Access Controller Software version V2R2C00	Huawei AP7110 Access Point
Cisco Systems, Inc.	5508 Wireless Controller Software version 7.0.103.0	Cisco Aironet 3602i (AIR-CAP3602i-C-K9)

Source: Tolly, September 2012

Table 2



## About Tolly...

The Tolly Group companies have been delivering world-class IT services for more than 20 years. Tolly is a leading global provider of third-party validation services for vendors of IT products, components and services.

You can reach the company by email at [sales@tolly.com](mailto:sales@tolly.com), or by telephone at +1 561.391.5610.

Visit Tolly on the Internet at:  
<http://www.tolly.com>

## Interaction with Competitors

In accordance with Tolly's Fair Testing Charter, Tolly personnel invited representatives from Cisco Systems to review the testing. Cisco did not respond to the invitation to participate in the evaluation and review the test plan.



For more information on the Tolly Fair Testing Charter, visit:  
<http://www.tolly.com/FTC.aspx>

## Terms of Usage

This document is provided, free-of-charge, to help you understand whether a given product, technology or service merits additional investigation for your particular needs. Any decision to purchase a product must be based on your own assessment of suitability based on your needs. The document should never be used as a substitute for advice from a qualified IT or business professional. This evaluation was focused on illustrating specific features and/or performance of the product(s) and was conducted under controlled, laboratory conditions. Certain tests may have been tailored to reflect performance under ideal conditions; performance may vary under real-world conditions. Users should run tests based on their own real-world scenarios to validate performance for their own networks.

Reasonable efforts were made to ensure the accuracy of the data contained herein but errors and/or oversights can occur. The test/audit documented herein may also rely on various test tools the accuracy of which is beyond our control. Furthermore, the document relies on certain representations by the sponsor that are beyond our control to verify. Among these is that the software/hardware tested is production or production track and is, or will be, available in equivalent or better form to commercial customers. Accordingly, this document is provided "as is", and Tolly Enterprises, LLC (Tolly) gives no warranty, representation or undertaking, whether express or implied, and accepts no legal responsibility, whether direct or indirect, for the accuracy, completeness, usefulness or suitability of any information contained herein. By reviewing this document, you agree that your use of any information contained herein is at your own risk, and you accept all risks and responsibility for losses, damages, costs and other consequences resulting directly or indirectly from any information or material available on it. Tolly is not responsible for, and you agree to hold Tolly and its related affiliates harmless from any loss, harm, injury or damage resulting from or arising out of your use of or reliance on any of the information provided herein.

Tolly makes no claim as to whether any product or company described herein is suitable for investment. You should obtain your own independent professional advice, whether legal, accounting or otherwise, before proceeding with any investment or project related to any information, products or companies described herein. When foreign translations exist, the English document is considered authoritative. To assure accuracy, only use documents downloaded directly from Tolly.com.

No part of any document may be reproduced, in whole or in part, without the specific written permission of Tolly. All trademarks used in the document are owned by their respective owners. You agree not to use any trademark in or as the whole or part of your own trademarks in connection with any activities, products or services which are not ours, or in a manner which may be confusing, misleading or deceptive or in a manner that disparages us or our information, projects or developments.