



Why Should I Care About the Cisco Catalyst 3750E-48TD?

Demands on IT infrastructure are changing. Improving network efficiency and articulating the clear value network infrastructure brings to your business have never been more important. Networking solutions that can expand with your business without costly upgrades or network disruptions maximize your network investment and can decrease network costs over time.

What Problems Need to be Solved?

Increased desktop bandwidth, expanded use of real-time communication and collaboration applications, and the desire to maximize networking investments are changing the way network solutions are designed and implemented. Supporting Gigabit Ethernet to the desktop often requires 10 Gigabit Ethernet for uplink connections to be able to maintain a quality experience for users. Purchasing a network solution today that grows with your business and network needs can help ensure your company's competitiveness and success for tomorrow.

Figure 1. Cisco Catalyst 3750E



Cisco Catalyst 3750E-48TD

The Cisco® Catalyst® 3750E Series Switches with StackWisePlus are an enterprise-class line of stackable wiring closet switches that enable the deployment of secure converged applications while maximizing investment protection for evolving network and application requirements.

The configuration for the Cisco Catalyst 3750E-48TD includes 48 ports of 10/100/1000 Ethernet with dual 10 Gigabit Ethernet uplink ports.

Cisco StackWisePlus Technology

Cisco StackWisePlus technology is built on the Cisco StackWise® technology, which is a premium stacking architecture optimized for Gigabit Ethernet. StackWisePlus creates a highly resilient single unified system of up to nine switches, providing simplified management, local switching, and backward compatibility for existing Cisco Catalyst 3750 Series Switches, and enhanced stacking throughput for the entire system.

Cisco Catalyst 3750E-48TD Highlights

- StackWisePlus for ease of use and resiliency
- Modular power supply with externally available backup
- IPv6 routing and multicast routing in hardware
- Out-of-band Ethernet management port along with RS-232 console port
- Cisco TwinGig converter module for migrating uplinks from Gigabit Ethernet to 10 Gigabit Ethernet

Benefits of the Cisco Catalyst 3750E-48TD

- **Scale your network as your business grows**—With the TwinGig converter module, you can convert the 10 Gigabit Ethernet interfaces into dual Small Form-Factor Pluggable (SFP) uplink ports, allowing you to migrate from Gigabit to 10 Gigabit Ethernet for your uplinks at a later date without changing network devices.
- **Maximize your current infrastructure investment**—The Cisco Catalyst 3750E-48TD stacks with the Cisco Catalyst 3750 Series Switches, allowing you to benefit from the increased 10 Gigabit Ethernet port density while using your existing investment in Cisco Catalyst 3750 Series Switches.

Figure 2. Cisco TwinGig Adapter Converting 10 Gigabit Ethernet X2 Interface into Two Gigabit Ethernet SFP Interfaces



Why Cisco?

Cisco is leading the way in providing intelligent networking solutions that better enable real-time applications such as IP communications and collaborative peer-to-peer applications. Whether stacking new switches to an existing switch stack or adding modules to a modular switch, Cisco Catalyst Switches provide the scalability and investment protection for today's evolving customers.

Figure 3. Cisco Catalyst 3750E-48TD Switch in a Data Center Network

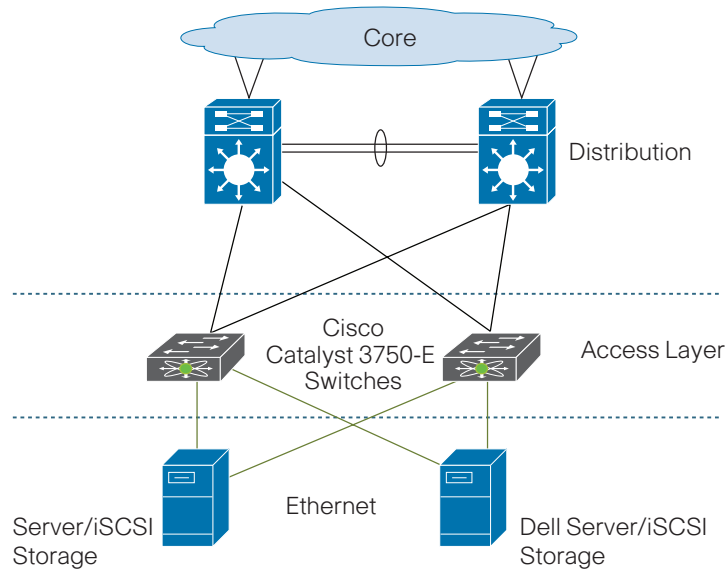


Table 1. Features

Feature and Description	Cisco Catalyst 3750E-48TD
Switching Capacity	160 Gbps
Throughput	101.2 Mpps
Height	1 rack unit (RU)
Modular Half-Card Slots	0
Maximum 10/100/1000 Ports	48
Maximum 10 Gigabit Ports	2
Maximum Gigabit Ethernet (Fiber) Ports	0
Cisco TwinGig Converter Module Support	Yes
Uplink Optic Types	2 X2 (10 Gigabit Ethernet) optics
Multilayer Switching	IP Base (IPB) and IP Services (IPS) options
Synchronous Dynamic RAM (SDRAM)	256 MB
Active VLANs	1005
IGMP Groups and Multicast Routes	1K
Per VLAN Spanning Tree (PVST) and VLAN IDs	4096
Spanning Tree Protocol Instances	128
Switch Virtual Interfaces (SVIs)	1000
Security and Quality-of-Service (QoS) Hardware Entries	Up to 2K Security and 0.5K QoS
Mac Addresses	Up to 12K
Switched Port Analyzer (SPAN)	Yes
USB Port	No
Compact Flash Support	No
System Reset Button	No
Minimum Software Requirement	Cisco IOS® Software Release 12.2.35-SE5(ED)



Cisco Catalyst 3750E-48TD Switch



THIRD PARTY PRODUCT INFORMATION
BROUGHT TO YOU COURTESY OF DELL

At-A-Glance

Table 2. Transceiver Modules

Cisco Catalyst 3750E-48TD Transceiver Modules	Part Number
10GBASE-LR X2 Module	X2-10GB-LR=
10GBASE-LRM X2 Module	X2-10GB-LRM=
10GBASE-SR X2 Module	X2-10GB-SR=
10GBASE-LX4 X2 Module	X2-10GB-LX4=
10GBASE-CX4 X2 Module	X2-10GB-CX4

Table 3. Cisco Catalyst 3750E Ordering Information

Catalyst 3750E Ordering Information	
WS-C3750E-48TD-S	<ul style="list-style-type: none">• 48 10/100/1000 ports + 2 X2-based 10 Gigabit Ethernet ports• 64-Gbps, high-speed StackWisePlus stacking• 160-Gbps wire rate, non-blocking switching fabric capacity• Field-replaceable 265WAC power supply and fan tray• 1RU stackable multilayer switch• IPv6• IP Base software feature set (IPB)
WS-C3750E-48TD-E	<ul style="list-style-type: none">• 48 10/100/1000 ports + 2 X2-based 10 Gigabit Ethernet ports• 64-Gbps, high-speed StackWisePlus stacking• 160-Gbps wire rate, non-blocking switching fabric capacity• Field-replaceable 265WAC power supply and fan tray• 1RU stackable multilayer switch• IPv6• IP Services software feature set (IPS)• Provides full IPv4 dynamic routing
C3K-PWR-750WAC	<ul style="list-style-type: none">• Optional power supply (one included, second unit optional)

For More Information

Please visit www.dell.com/ciscosolutions

The information contained in this document, including all instructions, cautions, and regulatory approvals and certifications, is provided by Cisco and has not been independently verified or tested by Dell. Dell cannot be responsible for damage caused as a result of either following or failing to follow these instructions. All statements or claims regarding the properties, capabilities, speeds, or qualifications of the part referenced in this document are made by Cisco and not by Dell. Dell specifically disclaims knowledge of the accuracy, completeness, or substantiation for any such statements. All questions or comments relating to such statements or claims should be directed to Cisco. Visit www.dell.com for more information.